



Merriwa Education Support Centre

Dear Parents & Families

It's week seven already and what a busy few weeks we have had. The Easter break is just a few weeks away.

SWIMMING

A big thankyou to all our staff for working together for a successful outcome for our kids in completing and passing their swimming stages. It was very heart-warming to hear of all the positive feedback our staff and school received from the community.

PRINCIPALS' AFTERNOON TEA

We are proud to acknowledge students who have been chosen to attend the Principals' Afternoon Tea, which will be held on Friday 4th April. This is a celebration of or expectations of being respectful, positive, friendly and achieving. Invitations will be issued soon.

SCHOOL PHOTO'S

Our annual school photo session is booked for Tuesday and Thursday of Week 10. A roster has been organised and your classroom teacher will let you know which day your child's photo has been scheduled.

EARLY CLOSE

On Wednesday 9 April, the school will close from 11.30 to allow for Parent teacher meetings to be managed for interim reporting of student progress. Please make arrangements with your child's teacher to book a suitable appointment time.

Merriwa Primary Schools' P&C Annual General Meeting

Tuesday 1st April 1.00pm - 2.30pm

Our P & C raise money for our school, please let us know if you are able to help out with our fundraising activities. It would be lovely to have more members to join this small group of hardworking parents.

Kind regards
Karen Macri
Principal

Breakfast Club
everyday day
from 8am in the
undercover area

Assembly
28th March
Room 9

P & C Pizza
Day
Wednesday
2nd April

School Photos
8th & 10th April

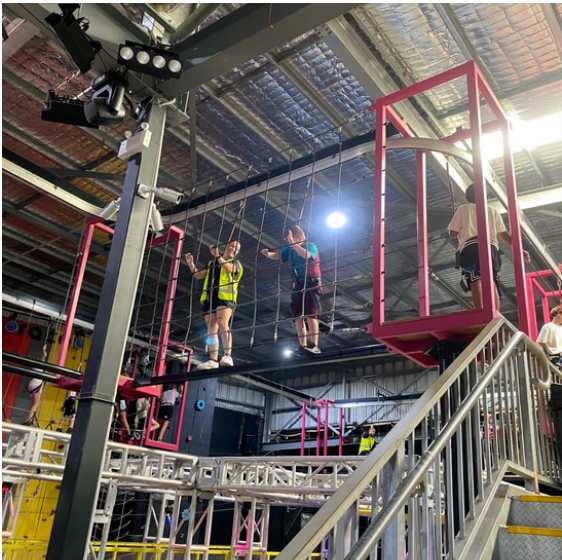
Early Close
Wednesday
9th April

Last Day of Term 1
Friday 11th April

Our Website
merriwaesc.wa.edu.au



YEAR 6 CAMP





ONLINE ORDERING SYSTEM

Merriwa Education Support Centre

Our School photos will be taken on:

Tuesday 8th and Thursday 10th April, 2025

Please see attached flyer or contact the office for further information



To our Merit Award Winners

Lily Room 29

Caleb Room 27

Izzy Room 35



CHAPLINS CORNER

Our Chaplin Sam provides hampers of fresh produce for all our families every Friday. Please feel free to collect what you like at school pickup in the front of the office.

You are invited to...

Merriwa Primary Schools P&C

Annual General Meeting

Where: Staff Room

When: Tuesday 1st April 1pm-2.30pm

Come find out more about your school and even join the P&C committee!

Join the P&C and help with fundraising to improve the schools and put MASSIVE smiles on the kids faces



Bring your ideas!! We would love to hear them!!

COMMUNITY NEWS



Receive up to \$500 from ANZ for education costs

Apply here 

Achieve a savings goal for 10 months and ANZ will match it up to \$500. You need to:

- Be 18 years or older
- Have a current Health Care Card or Pensioner Concession Card
- Have a child in school, starting school next year, or be studying yourself
- Get a regular income (can be you or your partner)
- Agree to join in free online financial education workshops


saverplus.org.au
1300 610 355

Terms and conditions apply.

TERM ONE DATES

COMMUNITY CAFE

Family Support for our Community

SESSION ONE	PRESENTED BY HELPING MINDS RAISING RESILIENT CHILDREN WORKSHOP	21ST MARCH 9-10AM MESC KINDY - RM 33
SESSION TWO	PRESENTED BY CARERS WA HOW CARERS WA CAN HELP YOU	4TH APRIL 9-10AM MESC KINDY - RM 33

RSVP: gillian.gore@education.wa.edu.au
or phone MESC office: 08 6206 2330



From our School Nurse Andrea

Role of the Community Health Nurse in Education Support Schools

Community Health Nurses work in Education Support Schools to provide services to children with physical and intellectual disabilities, and their families.

What do Community Health Nurses do in Education Support Schools?

- Provide advice and support to develop health care plans.*
- Provide support for a wide range of family and child health needs.*
- Assist schools to plan systems for first aid and emergency health care.*
- Support school staff to meet students' basic care needs, so students can fully participate in learning activities.*
 - Support school based immunisation programs.*

Community Health Nurses support families to support their children. If you are concerned about something affecting your child's health and wellbeing (at home or school) contact Andrea Zulch at andrea.zulch@health.wa.gov.au to arrange a suitable time to talk to or meet with the Nurse.