

# Business Plan 2024 - 2026

Dedicated and passionate staff providing learning programs  
for children with disability and complex needs





## Our Story

Merriwa Education Support Centre is an Independent Public School located on the Merriwa Primary School site. Our reputation as a welcoming and inclusive school is acknowledged in the community. We believe that all students can achieve when given the appropriate structures, and they have the right to thrive. We work with the understanding that every situation provides an opportunity for learning and value collaborative partnerships and teaching approaches to achieve meaningful goals for each child.

## Vision and Purpose

Merriwa ESC aims to provide purposeful and relevant learning programs through high quality instruction and evidence-based strategies to support each individual towards meaningful participation in their community.

An outcomes focused curriculum delivered in a supportive, safe, stimulating and inclusive learning environment ensures the development of academic, social, creative and physical skills while fostering independence in each child.

Our philosophy is to consider the needs of the individual child in every decision.

## Our Expectations

We set high expectations and set reasonable boundaries to ensure safety for students and staff.

Explicit teaching of school and classroom expectations is necessary to enable all students to achieve.





# We Believe

At MESC we educate our students through an holistic lens.

We believe in a whole school approach that focuses on:

- Consistent facilitation of evidence-based practices
- Delivering structured, inclusive and personalised programs
- Providing for the needs of the 'whole child'
- A multi modal approach for communication
- Regulation before expectation
- Valuing the student voice
- Building pathways for the future
- Developing foundational skills for future earning
- Collaborating with the child's network of champions



## Aligning with the Department of Education Every Student, Every Classroom, Every Day

### Our Improvement Drivers



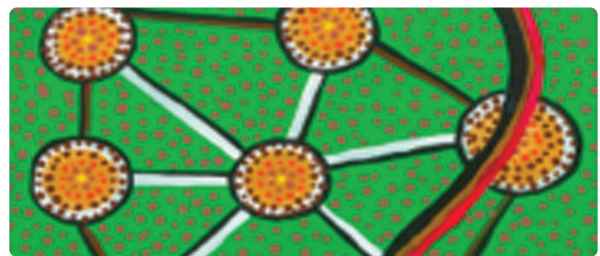
**1** Provide every student with a pathway to a successful future.



**2** Strengthen support for teaching and learning excellence in every classroom.



**3** Build the capability of our principals, our teachers and our allied professionals.



**4** Support increased school autonomy within a connected and unified public school system.



**5** Partner with families, communities and agencies to support the educational engagement of every student.



**6** Use evidence to drive decision making at all levels of the system.



# Focus 1

## Student Achievement and Quality Teaching

Our inspirational staff are passionate, dedicated and skilled, bringing a diverse range of experience and knowledge to Merriwa Education Support Centre. We strive for positive outcomes in student learning.

### We are committed to...

- Individualised student goals and aspirations for social, emotional, behavioural, academic, sensory and physical needs
- Identifying strengths and abilities of all students
- Creating an inclusive education environment with diversity in program delivery
- Delivering functional learning programs, which include:
  - Bike program
  - Cooking program
  - Community Access - road safety, transport, shopping
  - Music and Movement
  - Fundamental Movement Skills
- Consistent practices through whole school approaches
- Small class sizes with high ratio of staff: student
- Developing a collaborative staff who share our school vision
- Performance Development of staff
  - Frequent professional learning to update skills
  - Reflecting the needs of the child and the school
  - Purposeful classroom observations and feedback

### Success Indicators

- Students will achieve progress against their individual learning goals as evidenced by longitudinal tracking data
- Staff will be reflective and identify skill deficits which require development during their performance management meetings





# Focus 2

## Student Engagement

Listening and responding to the needs of our students is close to our hearts at Merriwa Education Support Centre. We make it our priority to implement a multitude of tailored education programs to ensure that our students are active learners.

## We are committed to...

- Providing tailored education programs at student level of need
- Activity based learning
- Structured learning which incorporates play skills and opportunities to learn and manage social and emotional well-being
- Flexible learning environments with equipment to cater for individual needs (indoor/outdoor)
- Self-regulation and co-regulation skill development
- Utilising strengths, abilities, and interests of the child
- Modelling and teaching appropriate and expected behaviour
- Encouraging regular attendance
- Building life skill capacity for all students to prepare for life beyond primary school
- Utilising various strategies and spaces to support self-regulation (movement breaks, sensory spaces, sensory profile consideration)

## Success Indicators

- Student achievement data aligns with attendance trends
- Students will show progress in their individual goals around Personal and Social Capabilities





# Focus 3

## Partnerships

Merriwa ESC staff collaborate with parents, staff, school psychologist, support workers and therapists to support each child to achieve their goals in a learning environment that is consistent and nurturing.

## We are committed to...

- Establishing a shared vision to help equip the students for the future
- Communicating through formal and informal platforms to determine and evaluate student goals
- Building relationships and a shared understanding with co-located Primary School, School Board and P&C
- Accessing community partnerships and engagement through Community Access Program
- Drawing on parent knowledge of their child's strengths
- Valuing parent and therapist feedback

## Success Indicators

- High rates of parent/carer interaction via communication platforms including Dojo
- Community survey results reflect positive interactions with key stakeholders





# Our Milestones

Upskilling and resourcing each classroom to enable all students to communicate effectively

Providing students with the tools and opportunities to achieve their goals and experience success

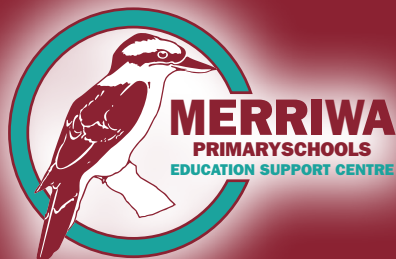
Students achieving at their level of ability, gaining independence and learning to self-regulate

To ensure that our community feels welcome in our school and that their needs are recognised and supported

Making operational decisions which are informed by authentic, systematic data collection

Embed a consistent and collaborative approach to whole school practises for learning and positive behaviour support





67 Baltimore Parade, Merriwa WA 6030  
Phone 08 6206 2330  
Merriwa.ESC@education.wa.edu.au  
[www.merriwaps.edu.au](http://www.merriwaps.edu.au)